

# Instructions for use



## Charger 1.0 miniRITE R miniBTE R

Oticon Real™  
Oticon More™  
Oticon Zircon  
Oticon Play PX  
Oticon Opn S™  
Oticon Opn Play™  
Oticon Ruby  
Oticon CROS PX

## Introduction to this booklet

This booklet guides you on how to use and maintain your new charger.

Ensure you read this booklet carefully, including the **Warnings** section. This will help you get the most benefit from your charger.

If you have additional questions about the use of your charger, contact your hearing care professional.

For your convenience, this booklet contains a navigation bar to help you navigate through the different sections.

| **About** | [Getting started](#) | [Daily use](#) | [Warnings](#) | [More info](#) |

### IMPORTANT NOTICE

For details on the functionality of your specific hearing aid solution, refer to your hearing aid's instructions for use.

## Intended use

<b>Intended use</b>	<p>The charger is intended to recharge the hearing aids and CROS transmitter that contain rechargeable batteries.</p> <p>The product is intended to be used together with the given hearing solution.</p>
<b>Indications for use</b>	<p>There are no indications for use (diagnoses) for the charger itself.</p>
<b>Intended user</b>	<p>Person with hearing loss using a hearing aid and their caregivers. Hearing care professional responsible for adjusting the accessory.</p>
<b>Intended user group</b>	<p>Adults and children older than 36 months.</p>
<b>Use environment</b>	<p>Home setting.</p>
<b>Contraindications</b>	<p>No contraindications.</p>
<b>Clinical benefits</b>	<p>See clinical benefits of the hearing aid.</p>

# Table of contents

## About

Package contents	5
Charger	6
Temperature conditions	7

## Getting started

Prepare charger	8
Charge the hearing aids	9
Charging time	10

## Daily use

Power the charger using other sources	12
Caring for your charger	13

## Warnings

General warnings	14
------------------	----

## More info

Troubleshooting	16
Conditions of use	20
Australia only	26
Warranty	27

# Package contents

The packaging box consists of the following elements:



Charger



Power plug  
(varies from  
country to country)



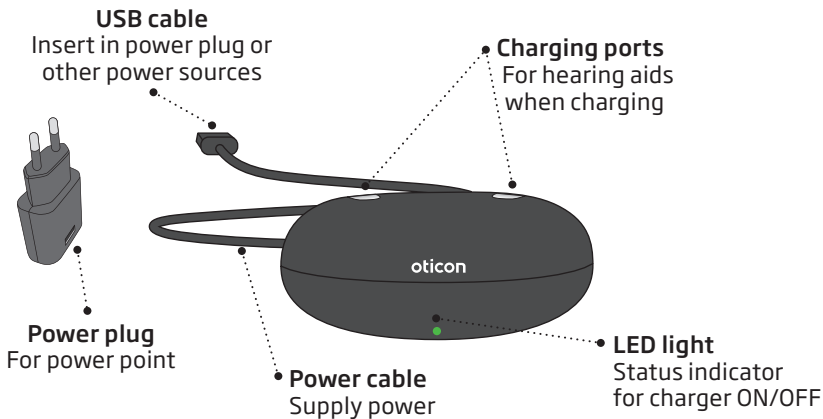
Case for charger



This booklet

# Charger

## What it is and does



# Temperature conditions

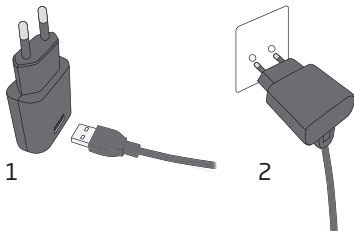
Temperature	Charging condition
Below +5°C (+41°F)	No charging due to low temperature
+10°C to +35°C (+50°F to +95°F)	Best charging condition. Charging takes up to 3.5 hours.
+5°C to +10°C and +35°C to +38°C (+41°F to 50°F and +95°F to +100°F)	Extended charging. Charging takes up to 5 hours.
Above +38°C (+100°F)	No charging due to high temperature

## IMPORTANT NOTICE

Ensure you always leave the charger connected to a power source when the hearing aid is seated in the charging port.

# Prepare charger

## Connect to power source

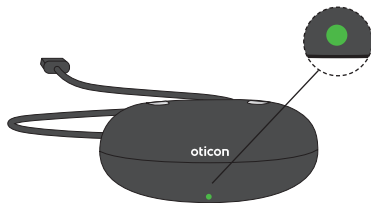


1. Insert the USB plug into the power plug.

2. Insert the power plug into a power point.

The charger turns ON automatically.

## Charger is turned ON



When the charger is connected to power, the GREEN LED turns ON.



# Charge the hearing aids

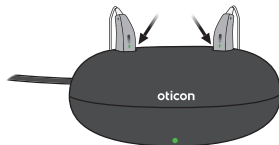
## Place hearing aids in charger



Place the hearing aids in the charging ports as shown in the picture. Make sure that the hearing aids match the right and left colour indicators on the charger.

The RED indicator is for the right side hearing aid. The BLUE indicator is for the left side hearing aid.

## Charging



The hearing aid LED lights turn ON when the hearing aids are correctly placed in the charger.

### Hearing aid LED light charging status:

ORANGE / RED\* = Charging  
GREEN = Fully charged

\*The colour is either orange or red depending on the hearing aid family. For more information see your hearing aid's instructions for use.

## Charging time

Ensure you fully charge your hearing aid before first time use.

Charge your hearing aid every night. That ensures you start your day with fully charged hearing aid.

Be aware that charging time may vary depending on the remaining capacity of the battery and between the left / right side hearing aid.

If your hearing aid's battery is completely drained the normal charging time is:

<b>miniRITE R</b>	Fully charged	50% charged	25% charged
	3 hours	1 hour	0.5 hours
<b>miniBTE R</b>	Fully charged	40% charged	20% charged
	3.5 hours	1 hour	0.5 hours

When the battery is fully charged, the charging process stops automatically.

Leave the hearing aid in the charger when you do not use it.

Remember to keep the charger connected to a power source at all times.\*

\* For select hearing models, turning the charger OFF makes the hearing aids turn ON and start using battery power. For more information, contact your hearing care professional.

**Note**

If you have not used your hearing aid in a long time and you then try to recharge it, it may take up to 30 seconds before the hearing aid begins charging. For more information, see your hearing aid's instructions for use.

## Power the charger using other sources

You can power the charger from other sources than a power point. This can be done by using the charger's USB cable.

Ensure that the power source is USB 2.0 compliant, with a minimum of 500mA output.

### Examples of power sources:

- Power bank
- Computer
- Car

#### Note

When using a power bank, ensure that it does not have a power-saving or auto-shutdown mode. As this can result in your hearing aid not being fully charged or not charged at all.

### IMPORTANT NOTICE

When using a power socket, use the supplied original power supply (5.0V/1A) for the charger.

## **Caring for your charger**

Always ensure that the charger is dry and clean before use. Keep the charging ports clean from dust by using a dry cloth. Do not use water or cleaning fluids to clean the charging ports.

Store your charger in a dry location, e.g. in the bedroom.

Ensure you keep the charger in an environment with a temperature between +5°C and +38°C (+41°F and +100°F).

## **General warnings**

For your personal safety and to ensure correct usage, you should familiarise yourself fully with the following general warnings before using your charger. Consult your hearing care professional if you experience unexpected operations or serious incidents with your charger during use or because of its use. Your hearing care professional will support you with issue handling and, if relevant, reporting to the manufacturer and/or the national authorities.

### **Risk of burns**

Do not place anything but the hearing aids in the charger ports.

### **Choking hazards and risk of swallowing small parts**

Charger, hearing aids and their parts should be kept out of reach of children and anyone who might swallow these items or otherwise cause injury to themselves.

*If a small part is swallowed, see a doctor or hospital immediately.*

### **Heat**

The charger must never be exposed to extreme heat, e.g. left inside a parked car in the sun.

The charger must not be dried in microwave ovens or other ovens.

### Connection to external equipment

The safety of the charger, when connected to external equipment with USB cable, is determined by the external signal source. When the charger is connected to external equipment which is plugged into a power point, this equipment must comply with IEC 62368-1 or equivalent safety standards.



### **WARNING**

New and used button/coin batteries are hazardous and should be kept away from children. Button/coin batteries can cause severe or fatal injuries in 2 hours or less if swallowed or placed inside any part of the body. Seek medical attention immediately if this is suspected.

If it is suspected a button/coin battery has been swallowed or otherwise placed inside any part of the body, you should contact the

Australian Poisons Information Centre  
on 13 11 26

New Zealand National Poisons Centre  
on 0800 764 766  
immediately for 24/7 fast, expert advice.

# Troubleshooting

Symptom	Possible causes
The charger LED remains turned OFF when the charger is connected to power	The charger is not turned ON
The charger LED shows long ORANGE blinks	The hearing aid or charger's temperature is too warm
The charger LED repeatedly shows three short ORANGE blinks	The charger's temperature is too cold
	System error



## Solutions

Verify that the power plug is correctly connected

Ensure that charging has started, to make sure the power source delivers sufficient output for your charger

Move the charger and hearing aid to a location with a temperature between +5°C and +38°C (+41°F and +100°F)

Move the charger to a location with a temperature between +5°C and +38°C (+41°F and +100°F)

Contact your hearing care professional

Continues on next page

# Troubleshooting

Symptom	Possible causes
The hearing aid LED blinks GREEN when hearing aid is placed in the charger	Hearing aid has not been in use for an extended period of time
The hearing aid LED remains turned OFF when the hearing aid is placed in the charger	The charger is not turned ON
	The hearing aid or charger's temperature is either too warm or too cold
	Charging is incomplete. The charger has stopped charging to protect the battery.
	The hearing aid is not correctly seated in the charger
The hearing aid LED blinks ORANGE / RED when the hearing aid is placed in the charger	System error

## Solutions

Depending on how depleted the battery in the hearing aid is, the hearing aid automatically resumes normal charging mode after a timeframe of up to 10 minutes

Ensure you leave the hearing aid in the charger during this process

Verify that the charger power plug is correctly connected

Move the charger and hearing aid to a location with a temperature between +5°C and +38°C (+41°F and +100°F)

Reinsert the hearing aid into the charger. This completes the charging within approximately 15 minutes.

Check the charging ports for foreign objects

Contact your hearing care professional

## Conditions of use

<b>Operating conditions</b>	Temperature: +5°C to +38°C (+41°F to +100°F) Humidity: 5% to 93%, non-condensing Atmospheric pressure: 700 hPa to 1060 hPa
<b>Transportation and storage conditions</b>	Temperature and humidity shall not exceed the below limits for extended periods during transportation and storage:  Temperature: -25°C to +70°C (-13°F to +158°F) Humidity: 5% to 93%, non-condensing

For information about your hearing aid's conditions of use, see your hearing aid's instructions for use.

This medical device complies with  
the Medical Device Regulation (EU)  
2017/745.

Declaration of Conformity is available  
from the headquarters:

Oticon A/S  
Kongebakken 9  
DK-2765 Smørum  
Denmark  
[www.oticon.global/doc](http://www.oticon.global/doc)



SBO Hearing A/S  
Kongebakken 9  
DK-2765 Smørum  
Denmark



Waste from electronic  
equipment must be  
handled according to  
local regulations.



## **Australian Sponsor**

Audmet Australia Pty Ltd  
Suite 4, Level 4, Building B  
11 Talavera Road  
North Ryde NSW 2113

## Description of symbols and abbreviations used in this booklet



### **Warnings**

Text marked with a warning symbol must be read before using the device.



### **Manufacturer**

The device is produced by the manufacturer whose name and address are stated next to the symbol. Indicates the medical device manufacturer, as defined in EU Regulations 2017/745.



### **CE mark**

The device complies with all required EU regulations and directives.



### **Electronic waste (WEEE)**

Recycle hearing aids, accessories or batteries according to local regulations. Hearing aid users can also return electronic waste to their hearing care professional for disposal. Electronic equipment covered by Directive 2012/19/EU on waste and electrical equipment (WEEE).



### **Regulatory Compliance Mark (RCM)**

The device complies with electrical safety, EMC and radio spectrum requirements for devices supplied to the Australian or New Zealand markets.



### **Button Battery Warning**

The device is intended to be used with button batteries. Refer to enclosed warnings before using the device.

## Description of additional symbols used on labels



### **Keep dry**

Indicates a medical device that needs to be protected from moisture.



### **Catalogue number**

Indicates the manufacturer's catalogue number so that the medical device can be identified.



### **Serial number**

Indicates the manufacturer's serial number so that a specific medical device can be identified.



### **Medical Device**

The device is a medical device.



### **Nature of supply voltage**

Indicates that the nature of the device's power supply voltage shall be DC (direct current).



### **FW**

Firmware version used in the device.



### **Unique device identifier**

Indicates a carrier that contains unique device identifier information.



# International warranty

Your device is covered by an international limited warranty issued by the manufacturer for a period of 12 months from the date of delivery to you. This limited warranty covers manufacturing and material defects in the device itself, but not in accessories such as batteries, cables, power supplies, etc. Problems arising from improper/incorrect handling or care, excessive use, accidents, repairs made by an unauthorised party, exposure to corrosive conditions, damage due to foreign objects entering the device or incorrect adjustments are NOT covered by the limited warranty and may void it. Under this warranty, the manufacturer will choose, at its sole discretion, whether to repair the device, or replace it with an equivalent model. The above warranty does not affect any

legal rights that you might have under applicable national legislation governing sale of consumer goods. Your hearing care professional may have issued a warranty that goes beyond the clauses of this limited warranty. Please consult him/her for further information.

## **If you need service**

Take your device to your hearing care professional, who may be able to sort out minor problems and make adjustments immediately. Your hearing care professional can assist you to obtain warranty service from the manufacturer. Your hearing care professional may charge a fee for their services.

## Australia only

The rights given under this warranty are in addition to other rights and remedies under a law in relation to the good or services to which the warranty relates to. Our goods come with guarantees that cannot be excluded under the Australian Consumer Law. You are entitled to a replacement or refund for a major failure and compensation for any other reasonably foreseeable loss or damage. You are also entitled to have the goods repaired or replaced if the goods fail to be of acceptable quality and the failure does not amount to a major failure.

Australian customers should contact Oticon Australia at Suite 4, Level 4, Building B, 11 Talavera Road, North Ryde NSW 2113. Telephone: 1800 633 738 if you have any questions regarding this warranty.

# Warranty

## Certificate

Name of owner: \_\_\_\_\_

Hearing care professional: \_\_\_\_\_

Hearing care professional's address: \_\_\_\_\_

Hearing care professional's phone: \_\_\_\_\_

Purchase date: \_\_\_\_\_

Model: \_\_\_\_\_ Serial no.: \_\_\_\_\_



**oticon**  
life-changing technology

262104AU / 2022.12.13 / v1