

OTICON | **ConnectLine**  
Microphone



Instructions for use

**oticon**  
PEOPLE FIRST

## Introduction to this booklet

This booklet guides you on how to use and maintain your new ConnectLine Microphone. Please read the booklet carefully including the **Warning section**. This will help you get the most out of your new ConnectLine Microphone.

If you have additional questions about the use of your ConnectLine Microphone, please contact your hearing care professional.

For your convenience, this booklet contains a navigation bar to help you navigate easily through the different sections.

| **About** | [Startup](#) | [Handling](#) | [Warnings](#) | [More info](#) |

## Intended use

The Microphone is intended to be used by a person speaking to a hearing aid user, in order for the hearing aid user to better hear the person. The Microphone will transmit the speech from the speaker directly to the hearing aid user.

## Table of contents

<b>About</b>	
What's in the box?	6
Product overview	7
How the Microphone works	8
Charging / power indicator	10
<b>Startup</b>	
Pairing / initial setup (only needed once)	12
<b>Handling</b>	
Start / turn on / resume sound from Microphone	16
Pause sound	18
Resume sound from Streamer Pro	20
Check sound	22
Turn off Microphone	23
<b>Warnings</b>	
Not a toy	24
Use on aircraft	24

Active Implants	24
Do not expose to great heat	25
Cleaning	25
Only charge from UL/IEC approved equipment	25
Use of the lanyard	25
Explosives	26
Products complying with R&TTE	26
X-ray, CT, MR, PET scanning and electrotherapy	26
<b>More info</b>	
Warranty certificate	28
International warranty	29
Important additional information	32

## What's in the box?

Microphone



Carry pouch



Lanyard



Power supply (charger)



This manual



*\*Power supply will vary from country to country.*

## Product overview

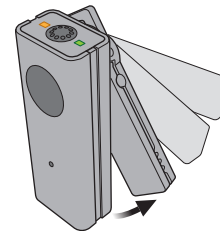
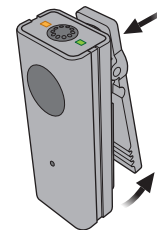
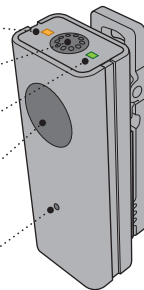
Status indicator (orange)

Microphone input (voice)

Power indicator (green)

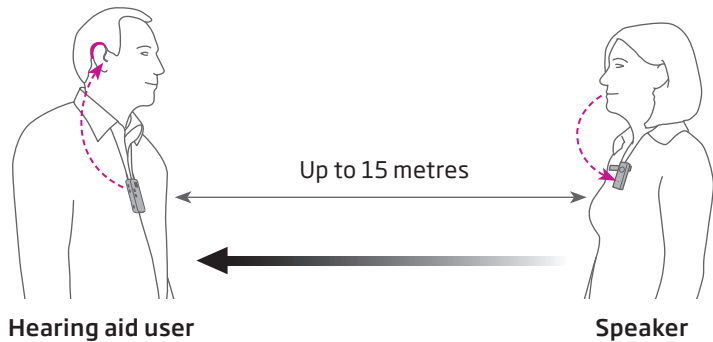
On/off button

Microphone input  
(noise detector),  
do not cover



## How the Microphone works

The Microphone will transmit the speech from the speaker directly to the hearing aid user.



The Microphone should point towards the speaker's mouth within a distance of 10 to 20 cm.



**Clip wearing**



**Wearing with lanyard**

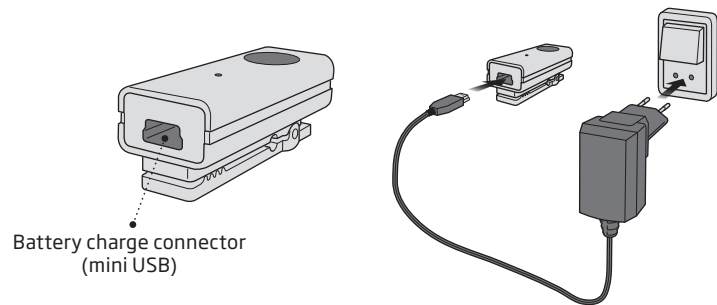


**Wrong wearing**

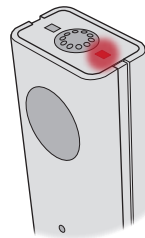
Note: A Microphone will only work with one Streamer at a time

## Charging / power indicator

To charge the Microphone, connect the power supply cord to the mini USB connector placed at the bottom of the Microphone.

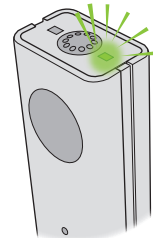


**Constant red light**



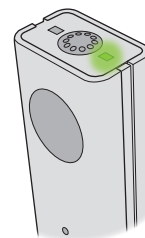
Battery low.  
Maximum 20 minutes  
of speaking time left.

**Blinking green light**



Charging.

**Constant green light**



Fully charged after  
approx. 1.5 hours and can  
be used for 5 hours on a  
full charge.

## Pairing / initial setup (only needed once)

### 1. Streamer Pro in pairing mode

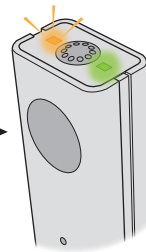


Press and hold the on/off button on the top.

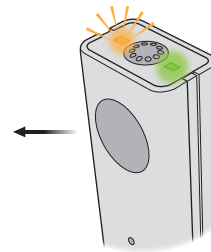


Hold until blue light flashes.

### 2. Microphone in pairing mode



Press and hold the on/off button on the Microphone for 6 seconds until orange light flashes rapidly.



Orange light is flashing rapidly in pairing mode.

### 3. Microphone paired



Wait up to 1 minute until orange light on Streamer Pro is on and orange light on Microphone is on.



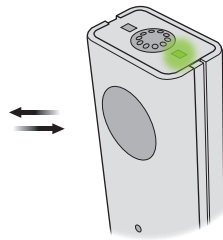
## Start / turn on / resume sound from Microphone

1. Make sure Streamer Pro is on



Press the on/off button on the top until all lights on the front and top flash to indicate it is powered on.

2. Start / turn on Microphone

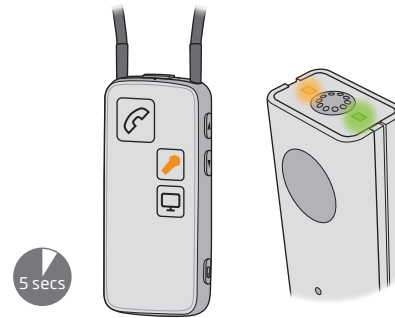


Short press on the on/off button.



Orange light slowly pulsating.

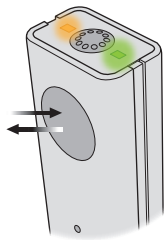
3. Sound from Microphone to Streamer Pro



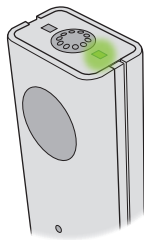
Orange light on Streamer Pro on and orange light on Microphone on.

## Pause sound

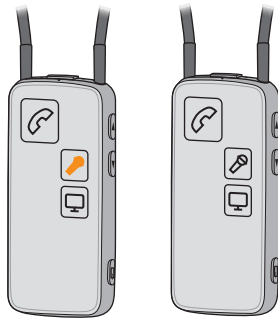
### a. Pause sound from Microphone



Short press on on/off button.

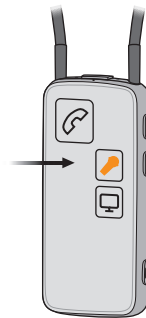


Orange light on Microphone turns off.



Orange light on Streamer Pro turns off.

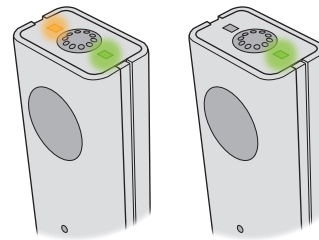
### b. Pause sound from Streamer Pro



Short press on Streamer Pro mic button.



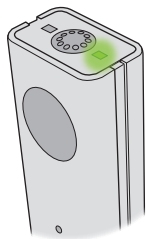
Orange light Streamer Pro off.



Orange light on Microphone turns off.

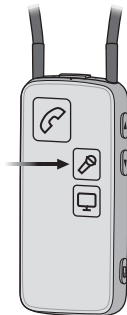
## Resume sound from Streamer Pro

### 1. Microphone has to be on



(Green light is on)

### 2. Start sound from Streamer Pro

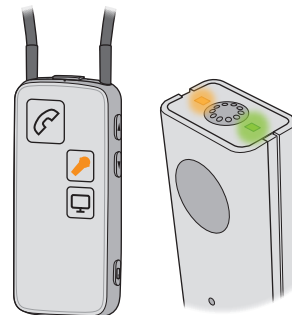


Short press on Streamer Pro mic button.



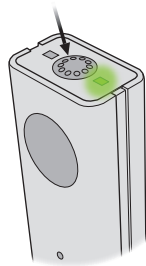
Orange light on Streamer Pro slowly pulsating.

### 3. Sound from Microphone to Streamer Pro



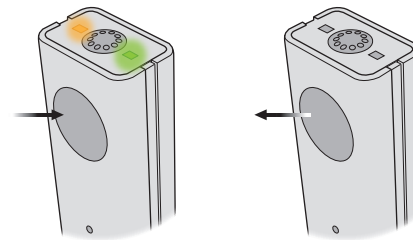
After 2 seconds, orange light on Microphone turns on.

## Check sound



Tap the top of the Microphone to check that the sound is heard in the hearing aids.

## Turn off Microphone



Press and hold for two seconds, until green light turns off.

## Warnings

Please familiarise yourself with the entire contents of this booklet before using your ConnectLine Microphone. It contains instructions and important information about the use and handling of your ConnectLine Microphone.

### Not a toy

- The ConnectLine Microphone is not a toy and therefore should be kept out of the reach of children and anyone else who might swallow parts or otherwise cause injury to themselves. Special attention should be paid to the smaller components in order to prevent children from swallowing them and choking. If a part is swallowed, see a doctor immediately.

### Use on aircraft

- The ConnectLine Microphone should not be used onboard an aircraft unless specifically permitted by the flight personnel.

### Active Implants

- Caution must be taken with active implants. Your ConnectLine Microphone has a wireless transmission. Please keep the microphone at least 15 cm away from the implant, e.g. do not carry it in a breast pocket. In general, please follow the guidelines recommended by manufacturers of implantable defibrillators and pacemakers on use with mobile phones.

- If you have an active brain implant, please contact the manufacturer of your implantable device for information about the risk of disturbance.

### Do not expose to great heat

- Never expose the ConnectLine Microphone to great heat by putting it in the oven or microwave oven or by burning it. There is a risk that it will explode and cause serious injury.

### Cleaning

- Oticon recommends cleaning on a regular basis, using a damp cloth without solvents.
- Do not immerse ConnectLine Microphone in water or other liquids.

### Only charge from UL/IEC approved equipment

- The safety of recharging batteries with the USB connector only is determined by the external equipment. When the USB connector is connected to mains-operated equipment, this equipment should be UL approved or comply with IEC 60950, IEC-60065, IEC-60601 or equivalent safety standards.

### Use of the lanyard

- If by accident the lanyard should get caught on something while wearing it, the lanyard is constructed to unlatch. Therefore, never try to shorten or modify the lanyard in an unauthorised way. The lanyard should not be used for children weighing less than 11 kg.

## Warnings

### Explosives

- The power source in your microphone has insufficient energy to cause fire under normal conditions of use. The microphone has not been tested for compliance with international standards concerning explosive atmospheres. It is recommended not to use your microphone in areas where there is a danger of explosions.

### Products complying with R&TTE

- When using the ConnectLine Microphone in Norway it must be ensured that no radio transmission is performed within a 20 km radius from the centre of Ny-Aalesund.

### X-ray, CT, MR, PET scanning and electrotherapy

- Do not wear the microphone during X-ray, CT / MR / PET scanning, electrotherapy or surgery.

## Warranty certificate

Name of owner: \_\_\_\_\_

Dispenser: \_\_\_\_\_

Dispenser address: \_\_\_\_\_

Dispenser phone: \_\_\_\_\_

Purchase date: \_\_\_\_\_

Warranty period: \_\_\_\_\_ Month: \_\_\_\_\_

Model: \_\_\_\_\_ Serial no.: \_\_\_\_\_

## International warranty

The manufacturer, Oticon, issues a one-year limited warranty to the original consumer of this product.

This warranty comes into effect upon the date of original purchase of this equipment, and will remain in effect for one calendar year from that date.

Please notice that extended warranties may apply in your country. Please contact your local hearing care professional for more information.

### What is covered by this warranty?

Any electronic component which, because of workmanship, manufacturing or design defects, fails to function properly under normal use during the life of this warranty will be replaced or repaired at no charge for parts or labour when returned to the point of purchase. Transportation is paid by the customer. If it is determined that repair is not feasible, the entire unit may be replaced with an equivalent unit upon mutual agreement of the hearing care professional and customer.

### **What is not covered by this warranty?**

This one-year limited warranty does not cover:

- Malfunctions resulting from abuse, neglect or accident.
- Peripheral accessories as itemised within the product brochure, when such items are later than 90 days from the original purchase.
- Batteries.
- Instruments connected, installed, used or adjusted in a manner contrary to the instructions provided.
- Consequential damages and damages resulting from delay or loss of this instrument. The exclusive remedy under this warranty is strictly limited to repair or replacement as herein provided.

- Products damaged in transit unless investigated by the shipper and returned to the warrantor with the investigation report.

The manufacturer reserves the right to make changes in the design or construction of any of its instruments at any time without incurring any obligation to make any changes whatsoever in units previously purchased. This warranty is in lieu of all other expressed warranties by the manufacturer. No representative or person is authorised to represent or assume for the manufacturer any liability in connection with the sale or use of this product other than as set forth above.

If your ConnectLine Microphone requires service under the terms of this warranty, carefully package the instrument to prevent damage in transit and return it to the point of purchase. Include a detailed description of the problem, your full name, billing and shipping address and telephone number.

The above warranty does not affect any legal rights that you might have under applicable national legislation governing sale of consumer goods. Your point of purchase may have issued a warranty that goes beyond the clauses of this limited warranty. Please consult your point of purchase for further information.



## Important additional information

The ConnectLine wireless Microphone contains a radio transmitter using a frequency hopping technology working in the ISM-band at 2.4 GHz.

The peak conducted output power of the transmitter is less than 6 dBm and the antenna is a small PCB antenna with a directional gain of less than 2 dBi (dB over an isotropic or omni-directional antenna).

The emission power from the ConnectLine Microphone is below international emission limits for Human Exposure. For comparison, the radiation of the ConnectLine Microphone is less than unintended electromagnetic radiation from for example hair dryers, electric shavers etc. The ConnectLine

Microphone complies with international standards concerning Electromagnetic Compatibility.

### USA and Canada

Due to the limited size available on the device, many of the relevant approval markings are found in this document.

### This instrument is certified under:

FCC ID: U28MIC110  
IC: 1350B-MIC110

The device complies with Part 15 of the FCC rules and with Industry Canada's licence-exempt RSSs.

### Operation is subject to the following two conditions:

This device may not cause harmful interference. This device must accept any interference received, including interference that may cause undesired operation.

**Note:** This equipment has been tested and found to comply with the limits for a Class B digital device, pursuant to Part 15 of the FCC Rules. These limits are designed to provide reasonable protection against harmful interference in a residential installation. This equipment generates, uses and can radiate radio frequency energy and, if not installed and used in accordance with the instructions, may cause harmful interference to radio communications. However, there is no guarantee that interference will not occur in a particular installation.

If this equipment does cause harmful interference to radio or television reception, which can be determined by turning the equipment off and on, the user is encouraged to try to correct the interference by one or more of the following measures:

- Reorient or relocate the receiving antenna.
- Increase the separation between the equipment and receiver.
- Connect the equipment into an outlet on a circuit different from that to which the receiver is connected.
- Consult the dealer or an experienced radio/TV technician for help.

Oticon hereby declares that this ConnectLine Microphone (Mic-110) is in compliance with the essential requirements and other relevant provisions of Directive 2014/53/EU.

Declaration of conformity is available at:



Oticon A/S  
Kongebakken 9  
DK-2765 Smørum  
Denmark  
[www.oticon.global](http://www.oticon.global)

164253UK / 2017.07.13



Waste from electronic equipment must be handled according to local regulations.



E2831



164253UK / 2017.07.13



oticon  
PEOPLE FIRST