

Make the world
louder!



Proven ultra power amplification
for extreme audibility





Make the world louder!

Sumo DM has a unique ability to maximise audibility and sound comfort for your most challenging clients. Using classic DSP technology, it constantly adapts to changing sound environments to optimise access to speech in noise.

Recognising the diversity in hearing capabilities for this group of users, Sumo DM

offers a large degree of flexibility to ensure the right fitting for each client's listening needs.

All this is delivered in a durable instrument with a long battery life, which has proven it's worth time and time again.

Power and dynamic Feedback Management

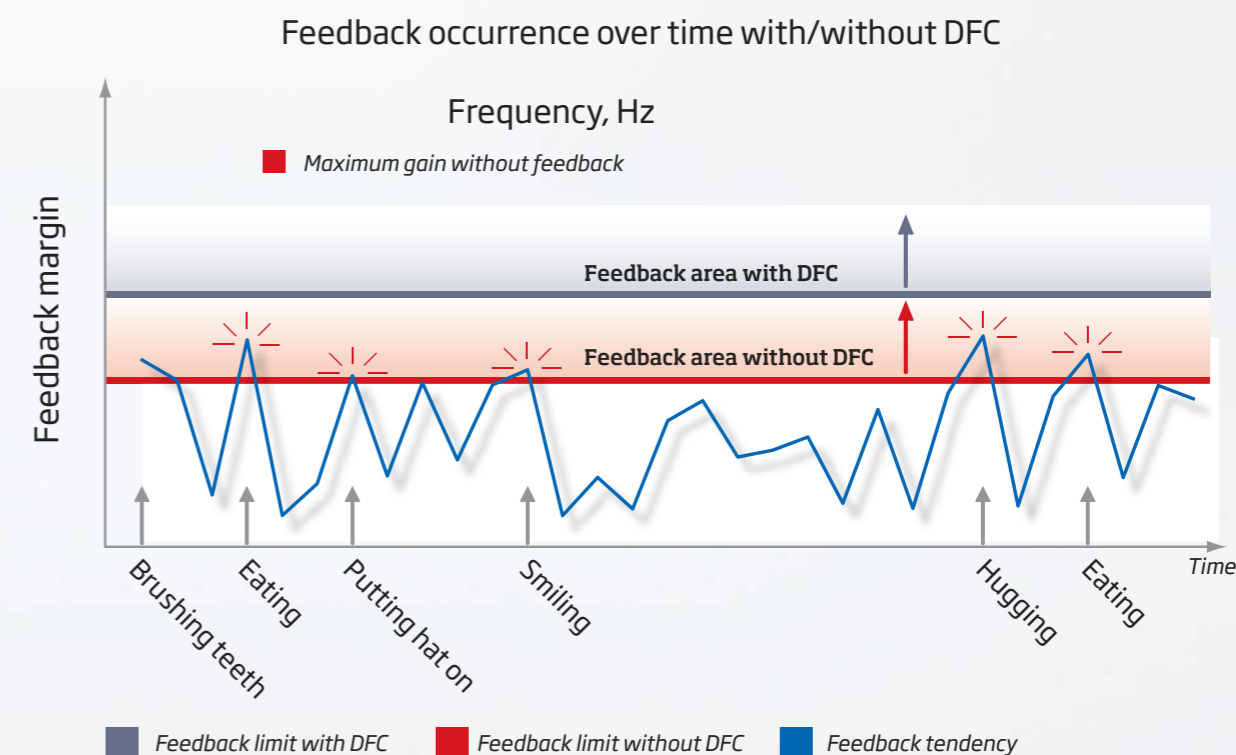
Sumo DM can fulfil the output needs of even your most demanding clients - even those needing extra low frequency power. A peak MPO of 144 dB SPL and an 85 dB full on gain require an efficient anti-feedback system. The original Dynamic Feedback Cancellation (DFC) in Sumo DM protects the user from feedback occurrence.

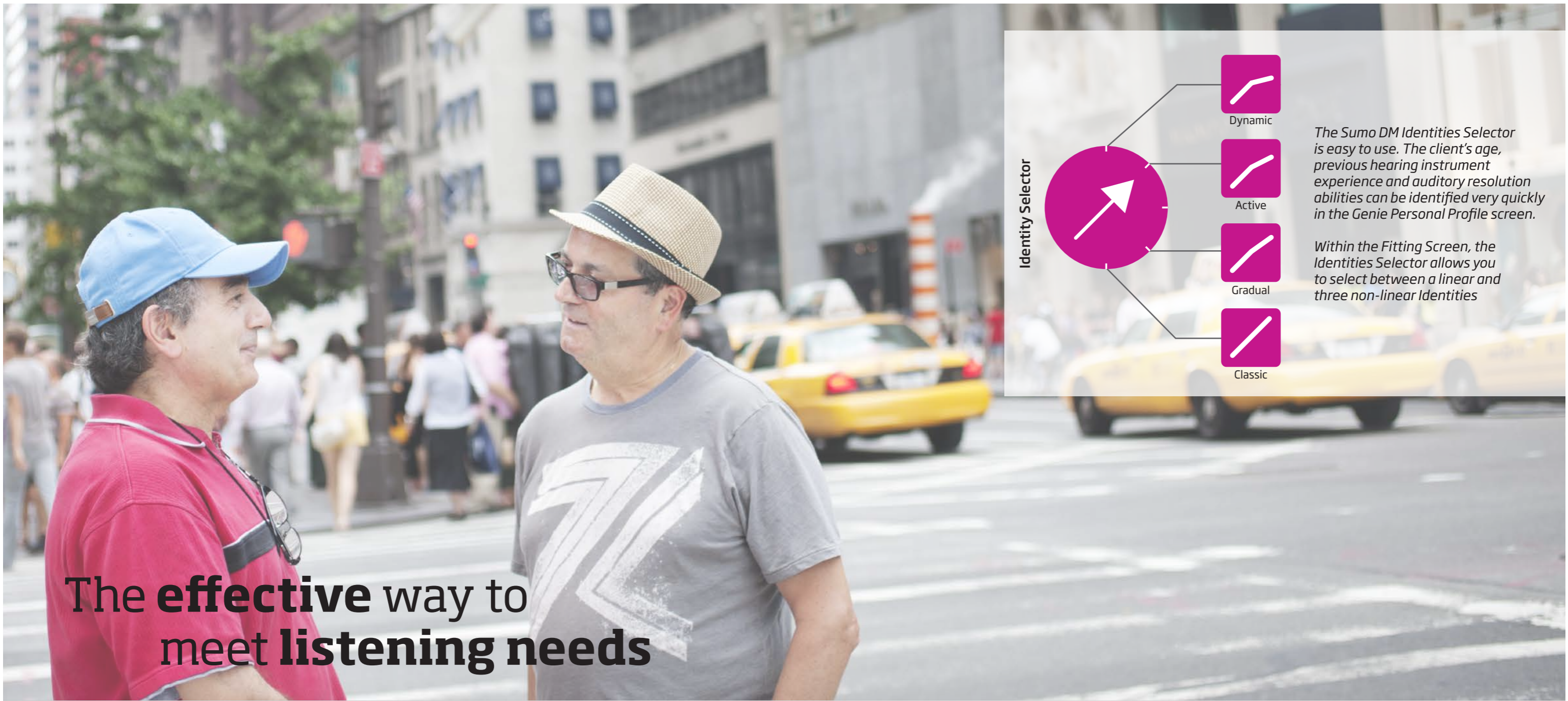
Feedback management

The core technology of the system is phase inversion. The feedback loop is cancelled out by applying the phase inverted signal. When successfully processed, phase inversion leaves the signal clean and comfortable.

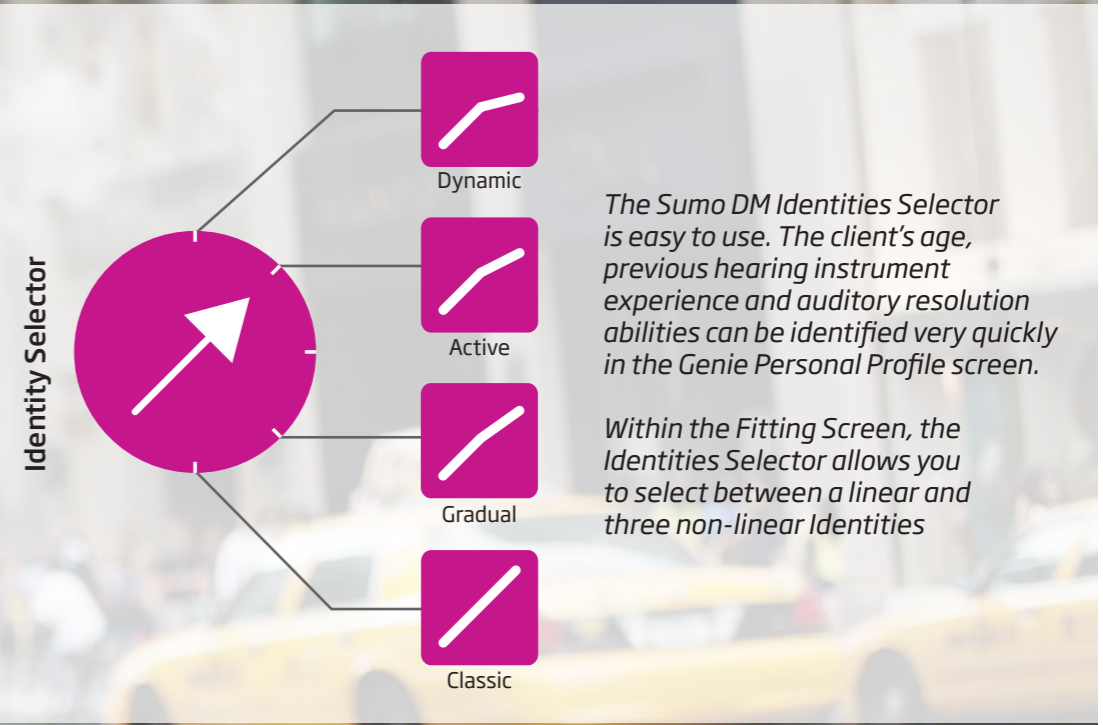
Smart volume control without feedback

The Feedback Manager is a crucial fitting tool for initialising the DFC and volume control systems, allowing you to consider individual ear mould characteristics. The Feedback Manager operates across all eight channels to determine the exact gain settings allowed within each channel. This primes the DFC for optimal operation and allows your client full use of the Volume Control, maximising gain across all frequencies within the set limits for optimal audibility, without invoking feedback.





The **effective** way to meet **listening needs**



People with severe-to-profound hearing loss require a holistic solution if they are to readily embrace a digital Ultra Power instrument - and this is precisely what Sumo DM offers.

With these clients, it is important to reach beyond the audiogram. Sumo DM's Identity-based fitting strategy is specifically designed to accomplish this. Each of the four Sumo Identities offers a unique sound processing strategy to meet each client's listening needs, enabling you to easily select the optimal starting point for a fitting.

The challenge of meeting your client's amplification needs

For a fitting to be successful, considerations beyond the hearing loss should be taken into account: age, previous experience with non-linear or linear instruments, co-morbidities and auditory resolution capabilities. These factors have a significant impact on a person's ability to process sound signals, e.g. clients with good auditory resolution capabilities can benefit from more complex sound signals. The four unique Sumo DM identities provide an easy way to incorporate these parameters into the fitting process.

Sumo DM identities: different strategies for individual listening needs

The Sumo DM identities are designed to provide a closer initial match to the hearing profile. The Sumo DM identity prescribes the DSEsp (Dynamic Speech Enhancement for super power) loudness model through adjusting the amount of gain, the compression characteristic and the dynamics across the eight independent channels, to fit the listening needs, of the user. Importantly, the identities offer a fine-tun-

ing tool for easy comparison of different strategies. The identities ensure that the TriState Noise Management system functions in synergy with the DSEsp loudness model to match the user's preferences.

Sumo DM has a wide range of fitting strategies. In addition to the four Sumo DSEsp identities, you can choose between a range of linear rationales: DSL Lin, NAL-RP and POGOII+BC.

Speech-controlled Noise Management

Users of Ultra Power instruments can be very challenged when trying to understand speech in noisy situations. TriState Noise Management in Sumo DM differentiates between three distinct listening situations. The noise management system constantly monitors the client's environment for speech and noise and responds quickly and seamlessly to all changes in sound.

- ▶ **Speech in quiet** - where the system remains inactive
- ▶ **Speech in noise** - where moderate speech-shaped attenuation is applied
- ▶ **Noise only** - where stronger noise reduction is applied



TriState Noise Management preserves the speech cues and provides an excellent balance between audibility and listening comfort.

Reliable and versatile



People with severe-to-profound hearing loss are highly dependent on their hearing instruments in day-to-day life. Sumo DM is built to provide year-round reliability in even the most demanding conditions and is **IP58** classified.

Complete versatility

Sumo DM offers a unique array of user controls and a full programme for assisted listening. It includes three OFF options to accommodate your client's personal preferences and to allow quick muting of the instrument while on the ear.

- ▶ VC: tactile OFF-click in VC wheel when turned to its lowest position
- ▶ Program switch: OFF position can be programmed in software (optional)
- ▶ Battery door: Instrument is OFF in open position for the 675 battery

Accessory programme

Ultra Power users frequently use teleloop, FM systems and DAI devices. Sumo DM's accessories programme was developed with this in mind. Whether at home, at work or in school the design integrated adaptor shoes and receiver ensure consistent input.

Paediatric features

Sumo DM includes an LED status indicator. The LED option indicates that the instrument is ON and that the battery is functioning. Additional functionality include flashing for power-up and programme indication as well as when the preferred VC level is reached. The LED status indicator and tamper resistant battery door is particularly useful for children and adults who require caregiver assistance.

SOLID COLOURS



TRANSPARENT



People First

People First is our promise
to empower people
to communicate freely,
interact naturally and
participate actively